

LA Best Babies Network

OUR NETWORK AND PARTNERS

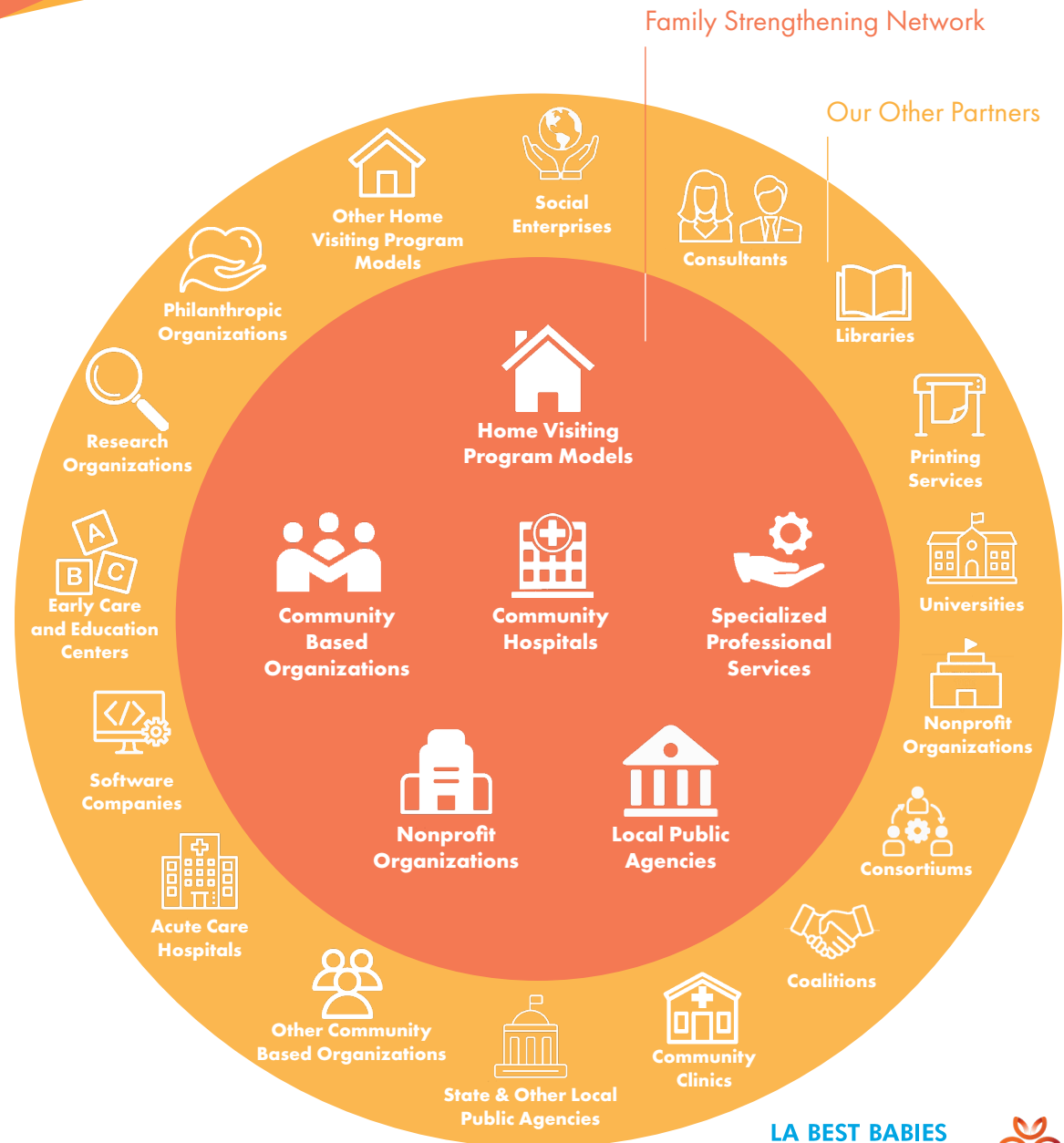
LA Best Babies Network (LABBN) — a community benefit of Dignity Health, California Hospital Medical Center in Los Angeles — collaborates with a diverse group of partners who are committed to supporting families and improving maternal and child health.

Family Strengthening Network

LABBN leads the Family Strengthening Network in partnership with: First 5 LA; Los Angeles County Departments of Public Health, Public Social Services, and Mental Health; and Work2Live Well. The Family Strengthening Network includes 14 hospitals and over two dozen community-based organizations that deliver home visiting services to pregnant women and families with newborns throughout L.A. County. LABBN provides the training, database, and communications infrastructure, and works with each hospital and organization to ensure fidelity to the program models the Network uses: Welcome Baby, Healthy Families America, and Parents as Teachers.

Our Other Partners

From influential organizations to leading professionals in their fields, LABBN's partners represent a wide variety of sectors. LABBN collaborates with them to make sure the county's home visiting programs have well-trained staff with the infrastructure and support systems needed to help families thrive.



A Dedicated Team of Partners and Supporters

Family Strengthening Network

- Antelope Valley Medical Center
- Antelope Valley Partners for Health
- California Hospital Medical Center
- Centinela Hospital Medical Center
- Child & Family Guidance Center
- Child Care Resource Center
- Children's Bureau
- Children's Institute
- El Nido Family Centers
- Emanate Health - Queen of the Valley Hospital
- Families in Good Health
- First 5 LA
- Foothill Family
- Healthy Families America
- Human Services Association
- L.A. County Department of Mental Health
- L.A. County Department of Public Health
- L.A. County Department of Public Social Services
- Martin Luther King, Jr. Community Hospital
- Maternal and Child Health Access
- MemorialCare Miller Children's and Women's Hospital – Long Beach
- Northridge Hospital Medical Center
- Pacific Asian Counseling Services
- Parents as Teachers
- Plaza Community Services
- Providence Holy Cross Medical Center
- Richstone Family Centers
- SHIELDS for Families
- St. Francis Medical Center
- St. Mary Medical Center
- The Children's Clinic
- The Lundquist Institute South Los Angeles Health Projects
- The Whole Child
- Torrance Memorial Medical Center
- Valley Presbyterian Hospital
- Welcome Baby
- Wellnest
- White Memorial Medical Center
- Work2Live Well

Other Partners

- African American Infant and Maternal Mortality Initiative, including the Doula Pilot Project
- AIR/Georgetown/Juarez
- Alliance for Children's Rights
- Angelique M. Anderson, DSW
- Happy Mama Healthy Baby Alliance
- Azusa Pacific University
- Baby's Space
- Barbara Stroud PhD Training and Consultation
- Big Orange Splot, LLC
- Black Infant Health
- Black Women for Wellness LA
- BreastfeedLA
- California Community Foundation
- California Endowment
- California State University, Northridge
- California WIC Association
- California Work and Family Coalition
- California Wellness Foundation
- Catherine Teresa Meng, NP
- Center for Reflective Communities
- Center for Reflective Parenting
- Chapin Hall at the University of Chicago
- Child and Family Team in Inyo County
- Children and Families Commission of Orange County
- CinnaMoms
- Coalition to Abolish Slavery & Trafficking (CAST)
- Community Partners
- Crystal Stairs
- Diversity Uplifts, Inc.
- Early Head Start
- Early Steps to School Success
- Echo Parenting & Education
- Eisner Health
- Elyse Springer, Marriage and Family Therapist
- Envision SRH
- Esperanza Community Housing Corporation
- Essential Access Health
- Esther Chon, PhD
- Eviction Defense Network
- Family Equality Council
- First 5 Association of California
- First 5 California
- Flourish Agenda, Inc.
- Fran Goldfarb, MA
- Frontline Doulas c/o Diversity Uplifts
- Futures Without Violence
- Gina Airey Consulting, Inc.
- GM Psychological Services
- Good Samaritan Hospital
- Harbor Regional Center
- Healthy Start

- History of the Fatherhood Movement & The Supporting Father Involvement (SFI) Project
- Hunger Action Los Angeles, Inc.
- Janet Gonzalez-Mena
- Kate Howard
- Katherine Anne Water-Smith
- Kathleen Kendall-Tackett, PhD
- KM Printing Productions, Inc.
- LA Partnership for Early Childhood Investment
- Learn 4 Life
- Loma Linda University Pediatric Residency Program
- Los Angeles County African American Infant and Maternal Mortality Initiative
- Los Angeles County Department of Child and Family Services – Parents in Partnerships
- Los Angeles County Department of Health Services, Women's Health Programs
- Los Angeles County Department of Health & Innovation – MAMA's Neighborhood
- Los Angeles County Department of Mental Health
- Los Angeles County Department of Public Health
 - Division of HIV & STD Programs, Clinical Guidance & Nursing Unit
 - Health Promotion Bureau
 - Los Angeles County Domestic Violence Council
 - Maternal, Child and Adolescent Health Programs – Comprehensive Perinatal Services Program (CPSP)
 - Office for the Advancement of Early Care and Education
 - Office of Women's Health
 - Substance Abuse Prevention and Control
- Los Angeles County Office of Child Protection
- Los Angeles County Office of Education
- Los Angeles County Perinatal Mental Health Task Force
- Los Angeles Public Library
- Love, Dad
- Lumos Transforms, LLC
- March of Dimes
- Maternal Mental Health NOW
- Maternal Health Task Force
- Matthew Merrick Johnson
- Miller Children's and Women's Hospital – Perinatal & Pediatric Palliative Care
- MY Team Effort Inc.
- Myisha Driver
- Nancy Ezra, PhD, LMFT
- National Home Visiting Resource Center
- National Immigration Law Center
- National Initiative for Children's Healthcare Quality
- NetChemistry
- Neva Chappette, Psy.D.
- North Los Angeles County Regional Center
- Northeast Valley Health Corporation
- Nurse-Family Partnership
- Origins Training and Consulting
- Parents as Teachers Telehealth at USC
- Partnerships for Families
- Patty Cason, MS, FNP-BC
- Peace Over Violence
- Perinatal Advisory Council: Leadership, Advocacy, and Consultation (PAC/LAC)
- Pew Research Center
- PHFE WIC
- PromoWorld
- Project Fatherhood
- Protecting Immigrant Families
- Public Counsel
- Public Counsel on the Children's Rights Project
- Raising Baby, Jewish Family Service LA
- RAND Corporation
- Rebecca Levenson Consulting
- Reflective Praxis Consulting
- Resilient One and Associates
- Return to Zero: H.O.P.E Inc.
- Ruth Beaglehole
- San Diego Breastfeeding Center, LLC
- SBCC Thrive L.A. Doula Project
- SGJ Consulting, Inc.
- SocialQuest
- Soul Water Rising
- Southern California Grantmakers
- Stacy Johnson
- Start Early
- Timothy Brewer, MD
- Tenants Together
- The National Center for Fatality Review and Prevention
- The Wall Las Memorias Project
- Thomas G. Keens, M.D.
- Treatment Innovations
- Triple P, Positive Parenting Program
- UC San Diego Health's Diabetes and Pregnancy Program
- UCLA Children's Hospital
- University of California, Los Angeles
- University of California, San Francisco
- University of Colorado
- University of Southern California
- Wold and Associates
- Worksite Wellness LA
- 211 LA County

LA BEST BABIES NETWORK



Updated 08/2023

To see a list of the Los Angeles County Perinatal and Early Childhood Home Visitation Consortium's member organizations, please visit HomeVisitingLA.org/MemberOrganizations.